

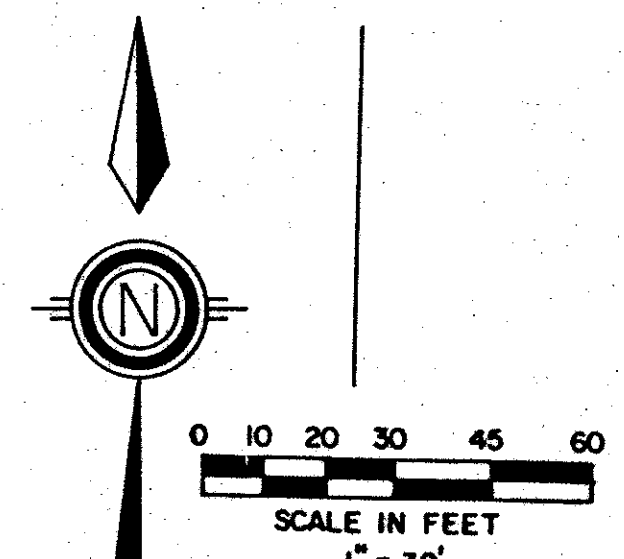
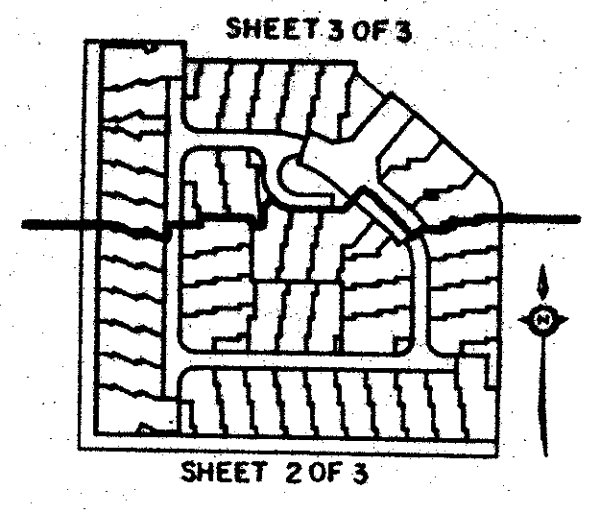
CRYSTAL POINTE PLAT FIVE

PART OF CRYSTAL POINTE P.U.D.
SITUATE IN SECTION 29, TOWNSHIP 41 SOUTH, RANGE 43 EAST
PALM BEACH COUNTY, FLORIDA

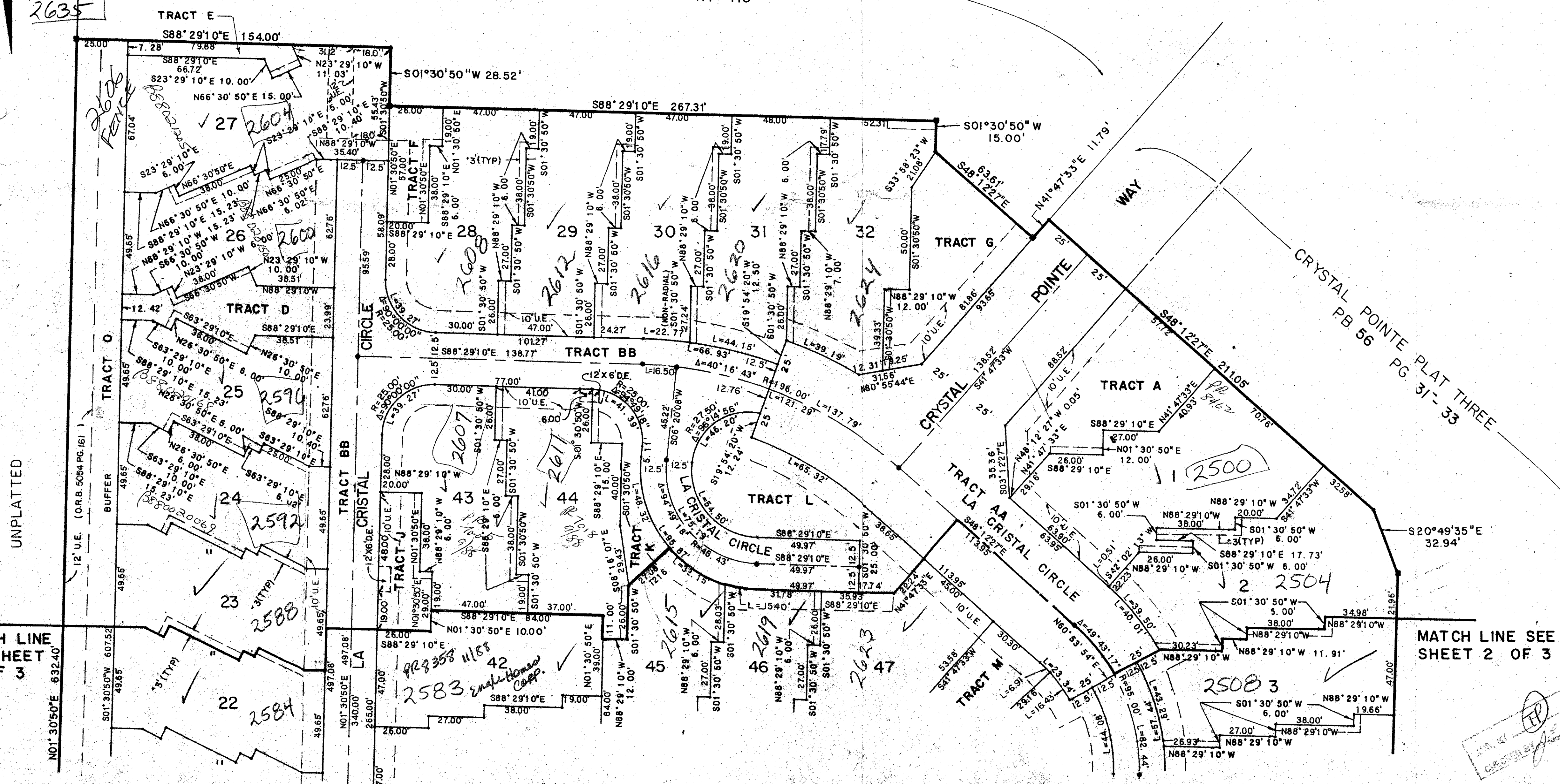
MAY . 1988

SHEET 3 OF 3

STATE OF FLORIDA
COUNTY OF PALM BEACH
THIS PLAT WAS FILED FOR
RECORD _____ DAY OF _____
AD, 1988 AND DULY RECORDED
IN PLAT BOOK _____ ON PAGES
_____ AND _____
BY: JOHN B. DUNKLE, CLERK
D.C.



CRYSTAL POINTE PLAT FOUR
PB 58 PGS. III - III3



UNPLATTED

MATCH LINE
SEE SHEET
2 OF 3

MATCH LINE SEE
SHEET 2 OF 3

3' TYPICAL MAINTENANCE ACCESS EASEMENT - REFER TO
HOMEOWNERS ASSO. DOCUMENTS.

Meridian
Surveying and mapping

2006 LOMBARD STREET
PALM BEACH, FL 33480

DRAWN	MHC	DATE	9-15-85
CHECKED	WGH	SCALE	1" = 30'
DRAWING NO.	85-P5-035		

CRYSTAL POINTE PLAT FIVE
PART OF
CRYSTAL POINTE P.U.D.

Bt. 85-109

0291-007

60/115

SUBDIVISION Crystal Pointe P.U.D.
BOOK 68 PAGE 115
PLAT NO. 85-109
DATE 9-15-85
BY: JOHN B. DUNKLE, CLERK
D.C.

TAZ 48
9/21/85